



## In this Issue...

JISC MediaHub: the definitive academic video, image & sound resource... 1

GoGeo: New look, new search architecture ..... 2

Conor Smyth, new head of Geo Services ..... 2

Release of OpenURL Router Data ..... 2

New tools for Digimap ..... 3

Key EDINA services renewed ..... 3

Integrate SUNCAT into your library services ..... 3

Augmented reality for smartphones ..... 3

GoGeo goes for GOLD..... 4

Usability Service Enhancements to Digimap (UseD) ..... 4

Digimap for Schools wins GOLD Certificate ..... 4

E-Journals: who is looking after what?..... 4

EDINA hands over Jorum.. 4

Forthcoming events ..... 4

## About EDINA

EDINA is a JISC-funded national datacentre based at the University of Edinburgh. It offers a library of data, information and research resources. Most EDINA services are free of charge at the point of use. For information on institutional subscription fees, visit the EDINA web site, or contact us (details below).

## Contacts

Tel: 0131 650 3302  
 Fax: 0131 650 3308  
 Email: [edina@ed.ac.uk](mailto:edina@ed.ac.uk)  
 Web: [edina.ac.uk](http://edina.ac.uk)

Suggestions and comments may be sent to [edina@ed.ac.uk](mailto:edina@ed.ac.uk)

# JISC MediaHub: the definitive academic video, image & sound resource

JISC MediaHub is a new service which opens up access to over one million multimedia assets.

The service gives users a single point-of-access to all the collections in the existing EDINA multimedia services: NewsFilm Online (NFO), Film & Sound Online (FSOL), and Education Image Gallery.

It also enables users to search an increasing range of other third-party collections relevant to UK Further and Higher Education, such as Culture Grid, Wellcome Images and The First World War Poetry Archive. We hope British Library Archival Sound Recordings, VADS, ARKive and Scran will follow soon.

A beta version is available for all institutions already subscribing to NFO, FSOL or EIG until August. In addition, access to each of these EDINA services continues in parallel via their respective login pages until August.

## Positive community response

Early feedback on JISC MediaHub is positive, as is the firm backing from JISC. Professor David Baker, Deputy Chair of the JISC Board, said

"The massive increase in digital media has created exciting challenges and opportunities for the online delivery of message and meaning through visual rather than text-based media. JISC MediaHub is a very good example of how JISC is responding to these challenges and opportunities, and I hope it will in future play a role in 'Discovery: A metadata ecology for UK education and research', the newly-launched JISC and RLUK initiative."

EDINA would like to thank all those who submitted comments during the JISC MediaHub preview phase and those who have given us feedback when using NFO, FSOL and EIG.

JISC MediaHub will continue to enhance its functionality and content until August when access will be more generally available via UK access management and IP for streaming and download.

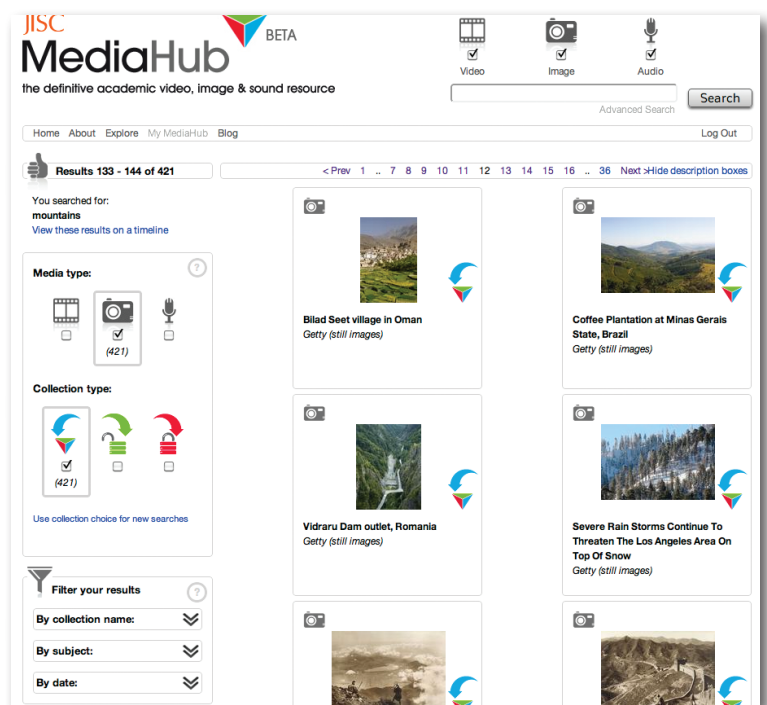
## JISC eCollections

From August JISC MediaHub becomes part of the new **JISC eCollections** service, which will also offer: *JISC Historic Books*: The full text or page images of over 300,000 books published in England before 1800 and uniquely, and never before available online, over 65,000 19th Century books from the British Library; and *JISC Journal Archives*: more than 3.75 million articles from over 450 journals of major publishers and societies – Brill, Institution of Civil Engineers, Institute of Physics, ProQuest, Oxford University Press, The Royal Society of Chemistry.

You can subscribe to JISC eCollections now:

[www.jisc-collections.ac.uk/Catalogue/Overview/index/1012](http://www.jisc-collections.ac.uk/Catalogue/Overview/index/1012)

- JISC MediaHub: [jiscmediahub.ac.uk](http://jiscmediahub.ac.uk)
- JISC and RLUK Discovery: [discovery.ac.uk](http://discovery.ac.uk)



JISC MediaHub: part of the growing metadata ecology for UK education & research.

## GoGeo: New look, new search architecture

GoGeo now sports an interface improved in usability, functionality and visual design.

A new look GoGeo went live at the end of May, updating the previous design from 2007. Jackie Clark, EDINA web designer, explains some of the principles behind her new design:

“We’ve moved away from a ‘newspaper’ style interface, with much information and links to browse on the homepage, to a more ‘compact’ design which is hopefully less daunting for the user to digest.”

Other key aims of this new design are the incorporation of live feeds from other content-generating resources, including the GoGeo Twitter account and a live feed of the newest datasets added into the ShareGeo Open data repository.

Dynamic panels, where the content is controlled by the user hovering their mouse, enable the surfacing of much useful content on the home page, such as those related to metadata, which previously were far down the page and infrequently visited. As greater importance is placed on metadata, e.g. from the INSPIRE regulations, it is expected such content will be used more often.

Metadata searches are also powered by a new technical architecture: the GeoNetwork open source catalogue application now drives the metadata searching, enabling GoGeo to harvest metadata records from catalogues supporting the Catalog Services for the Web specification as well as OAI-PMH and z39.50 targets. This allows GoGeo to harvest new catalogues being made available in response to INSPIRE, therefore enabling the discovery of even more geospatial data.

## Conor Smyth, new head of Geo Services



Conor Smyth, EDINA's new Head of Research and Geodata Services

We are pleased to welcome Conor Smyth as Head of Research and Geodata Services at EDINA. Conor took over the position on 3 May 2011.

Conor's career in the application of geospatial science spans over 18 years, ranging from applied multi-disciplinary GIS research and modelling in Brazil and the UK, and latterly, to the establishment, development and management of enterprise GIS/GPS solutions and projects.

Previous activities included:

- Chair, AGI Northern Ireland Regional Group (2004 until April 2011).
- Director, AGI - having served two terms on AGI Council since 2004 (as co-opted member), 2006-2008 and 2009-2011 terms (resigning in April 2011).
- Actively involved in all phases of the GI Strategy for Northern Ireland since inception in 2001 (first UK Strategy).
- Former Member of the NI GI Strategy (2009-2019) 'Delivery Board' responsible for implementation of the four key identified Strategy Action Areas.

In his new and challenging role, Conor looks forward to contributing to the strategic direction of EDINA, and the GeoData Services team, in what is an ever-changing technological, social and economic environment.



GoGeo's home page now sports dynamic panels that surface much useful content.

On a final note, GoGeo has also dropped the unusual punctuation (Go-Geo!) that has foxed many a spell-checker over the years.

For a more detailed review of the improvements to GoGeo, please read the post in the GoGeo Blog ([gogeo.blogs.edina.ac.uk/2011/05/20/gogeo-gets-a-make-over](http://gogeo.blogs.edina.ac.uk/2011/05/20/gogeo-gets-a-make-over)). If you have any comments about the new look GoGeo, please drop the team a note through the Contact Us form ([www.gogeo.ac.uk/gogeo/contactUs.htm](http://www.gogeo.ac.uk/gogeo/contactUs.htm)).

- GoGeo: [www.gogeo.ac.uk](http://www.gogeo.ac.uk)

## Release of OpenURL Router Data

EDINA has released the first set of OpenURL Router Data under the Open Data Commons – Public Domain Dedication Licence (ODC-PDDL) with Attribution Sharealike Community Norms.

- Open Data Commons licence: [www.opendatacommons.org/licenses/pddl/](http://www.opendatacommons.org/licenses/pddl/)
- Attribution Sharealike Community Norms: [www.opendatacommons.org/norms/odc-by-sa/](http://www.opendatacommons.org/norms/odc-by-sa/)

This is the product of JISC-funded project activity, and provides a unique data set derived from the log of requests to the OpenURL Router.

The data captured vary from request to request since different users enter different information into requests. Further information on the details of the data set, sample files and the data itself is available at OpenURL Router Data.

The team would like to thank all the institutions involved in this initiative for their participation.

- OpenURL Router Data: [openurl.ac.uk/doc/data/data.html](http://openurl.ac.uk/doc/data/data.html)

Further data will be made available monthly, and a prototype application will be developed based on the data in the coming months.

If you use the data please do let us know at [edina@ed.ac.uk](mailto:edina@ed.ac.uk), or tweet using #openurlrd.

- Further project details: [edina.ac.uk/projects/Using\\_OpenURL\\_Activity\\_data\\_summary.html](http://edina.ac.uk/projects/Using_OpenURL_Activity_data_summary.html)

## New tools for Digimap

Digimap has rolled out new functionality for both the Digimap Roam and Geology Roam interfaces.

### Ordnance Survey Collection

EDINA has been busy over these last few months creating some significant new features for Digimap Roam. To complement the measurement tools we added at the beginning of April we have now added annotation tools.

These tools will allow users to

- draw symbols, lines and polygons on the map
- add text, labels and area values
- set the colour and style of the features you have added

The features added remain the same geographical size when zooming in and out and can be included on PDF print maps.

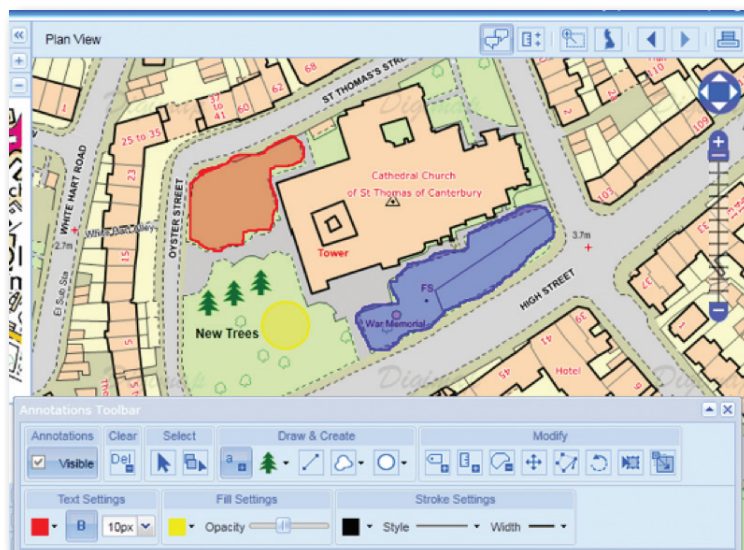
### Geology Roam

#### Print Labels

The print labels show the lexicon code for each of the rocks on the map, allowing for easy identification on a paper map and distinguish rocks with similar colours.

#### Active Legend

The Active Legend allows for the reordering of entries in the legend alphabetically or by the number units of that rock type.



New tools in Digimap Roam allow the drawing of symbols, lines and polygons on a map in addition to adding text, labels and area values.

Users can also click on the map to highlight rocks which will then be identified in the legend, and vice versa: rock selected in the legend will be highlighted on the map. This tool is still in beta.

- Digimap: [edina.ac.uk/digimap](http://edina.ac.uk/digimap)

## Key EDINA services renewed

EDINA offers a number of key specialist online services in addition to its core JISC-funded services. The licences for these services often extend beyond just academic institutions, some allowing individuals as well as organisations to subscribe.

Institutional trials are available for those wishing to evaluate any of the services by contacting us at [edina@ed.ac.uk](mailto:edina@ed.ac.uk).

**CAB Abstracts:** The leading applied-life-science bibliographic database compiled by CAB International now contains over five million records from 1973 to date, from over 10,000 serial titles, books, monographs, technical reports, proceedings and theses.

[edina.ac.uk/cab](http://edina.ac.uk/cab)

**Land Life Leisure:** A weekly index of current practice and developments in temperate agriculture and all rural topics, with indexing contributions from a number of colleges.

[edina.ac.uk/landlifeleisure](http://edina.ac.uk/landlifeleisure)

**Statistical Accounts of Scotland 1791-1845:** A unique contemporary view of Britain during the agricultural and industrial revolutions. In addition to annual subscriptions, individuals have options to subscribe for shorter periods via an online payment system which enables instant access to the service.

[edina.ac.uk/stat-acc-scot](http://edina.ac.uk/stat-acc-scot)

**agcensus:** Grid-square Agricultural Census data for England, Scotland and Wales, from 1969 to present. Users can visualise or download data, and the service offers download in the OGC Standard KML format which will allow registered users to visualise the data using open geo-browsers. A free demonstration is available from the website.

[edina.ac.uk/agcensus](http://edina.ac.uk/agcensus)

## Integrate SUNCAT into your library services

SUNCAT provides your students and researchers with information on journals held elsewhere, including links to open access journals and tables of contents.

A handy guide has been created to highlight SUNCAT Google and Facebook apps, in addition to the benefits of adding SUNCAT to your link resolver, federated or cross search service, library catalogue or website.

- SUNCAT integration document: [www.sunecat.ac.uk/docs/integrate\\_sunecat.pdf](http://www.sunecat.ac.uk/docs/integrate_sunecat.pdf)

Please contact us at [edina@ed.ac.uk](mailto:edina@ed.ac.uk) if you have any queries about the information in the guide, or to order print copies of this guide or the SUNCAT flyer.

- Further information at [www.sunecat.ac.uk](http://www.sunecat.ac.uk)  
[www.sunecatblog.blogspot.com](http://www.sunecatblog.blogspot.com)
- Follow SUNCAT on Twitter: [twitter.com/suncatteam](https://twitter.com/suncatteam)

## Augmented reality for smartphones

The final version of the TechWatch Report Augmented Reality for Smartphones report is now available to download as a PDF.

The report is primarily aimed at developers and content publishers who want to take advantage of the latest developments in smartphone and augmented reality (AR) technology to create novel and exciting new learning experiences.

It has been through an open review process and has been both peer-reviewed by experts in the field and made available publicly for comments.

This is the first in a series of TechWatch reports that are currently being commissioned by the JISC Observatory, and was written by Ben Butchart from EDINA.

- Report link: [observatory.jisc.ac.uk/docs/AR\\_Smartphone\\_final.pdf](http://observatory.jisc.ac.uk/docs/AR_Smartphone_final.pdf)

## E-Journals: who is looking after what?

A new registry service, currently in beta testing, was formally launched at a meeting of the ISSN Governing Board in Paris on 28 April 2011. The ISSN International Centre is EDINA's partner in the JISC-funded **PEPRS** project, a pilot for an e-journal preservation registry service.

Check to see whether anyone is looking after the e-journals you care about via [www.peprs.org](http://www.peprs.org) – this service aggregates metadata about e-journal preservation from five major archiving agencies: CLOCKSS, Portico, Global LOCKSS Network, British Library and the e-Depot at the Koninklijke Bibliotheek (National Library of the Netherlands).

We are carrying out a short survey to gather feedback on the beta service – all responses will be gratefully received: [www.surveymonkey.com/s/peprs-beta-service](http://www.surveymonkey.com/s/peprs-beta-service)

New functionality is being developed – check the FAQ for information – and the project team would welcome offers from users to assist in the testing process: please contact us at [edina@ed.ac.uk](mailto:edina@ed.ac.uk).

## Digimap for Schools wins GOLD Certificate

The new Digimap for Schools service was awarded the GOLD Certificate for the best overall resource in the Geographical Association's 2011 Publishers' Awards at the association's Annual Conference in April.

The award was presented to EDINA's Director, Peter Burnhill and Ordnance Survey's Director-General and CEO, Vanessa Lawrence.

Digimap for Schools is a joint venture between EDINA (University of Edinburgh), Ordnance Survey and JISC Collections.

- Digimap for Schools: [digimapforschools.edina.ac.uk](http://digimapforschools.edina.ac.uk)

## Usability Service Enhancements to Digimap (USEd)

The USEd project will focus on improving the usability and learnability of the Digimap Data Downloader, which provides students with a way of selecting and downloading OS data for use on their personal computers.

USEd will investigate who uses the download service and will define a number of typical user personas. A new interface will be mocked up for usability and learnability testing. The results of this testing will be fed back to improve the usability of the downloader.

The USEd project will run for six months from early July 2011.

- USEd project blog: [used.blogs.edina.ac.uk](http://used.blogs.edina.ac.uk)

## GoGeo goes for GOLD

GOLD (GoGeo as Linked Data) is a short project funded by JISC under the auspices of Discovery. The purpose of GOLD is to expose the GoGeo Catalogue and the Scottish Government Spatial Discovery Portal CSW content as a Linked Data triple store, to improve the discoverability of metadata records and increase the catalogue's openness. A range of technical approaches will be reviewed (schema cross-walking, production direct from relational databases and an UML to RDF approach), and open-source software produced.

As well as the Linked Data version of the above catalogues, GOLD will deliver a report detailing the technical investigations and alternate methods of producing the linked data store.

- Project summary: [edina.ac.uk/projects/gold\\_summary.html](http://edina.ac.uk/projects/gold_summary.html)
- Discovery: [discovery.ac.uk](http://discovery.ac.uk)

## EDINA hands over Jorum

EDINA's role in creating, implementing and supporting Jorum, the UK's national repository for learning and teaching resources, will come to a successful conclusion on 31 July 2011 after nine years of joint development between EDINA and Mimas, resulting in a service which provides access to over 14,000 resources.

"I am very proud of the work that EDINA has done for Jorum and its users", said Peter Burnhill, Co-Director of Jorum from its inception and Director of EDINA. "Our expertise in DSpace customisation, licensing and service delivery has enabled provision of a robust socio-technical infrastructure for Jorum and for academic content more generally."

Jorum will be taken forward into service by Mimas from August 2011. Until August, EDINA will support JISC and Mimas to ensure the smooth transition of Jorum to operation at Mimas. In wishing the best for the success of Jorum in the future, staff at EDINA will make those project deliverables for which they were principally responsible available via the EDINA website for others to use. These include new features for the DSpace repository platform and a variety of legal and policy documents. All software outputs have already been made available under an open source licence through the EDINA Developer Corner and GitHub (a collaborative software code repository).

Rachel Bruce, Innovation Director at JISC, noted: "EDINA and Mimas pioneered the Jorum service when it was one of the first of its kind. EDINA has successfully led the technical work in creating APIs and now in sharing the repository code to enable developers to work with the wealth of content in Jorum. As we move to service via Mimas, I must acknowledge the expertise and commitment from EDINA, without which the basis of this innovative service would not have been possible."

- EDINA's role in Jorum: [edina.ac.uk/projects/jorum](http://edina.ac.uk/projects/jorum)
- Jorum Software Outputs: [github.com/edina-jorum](http://github.com/edina-jorum)
- EDINA Developer Corner: [developer.edina.ac.uk](http://developer.edina.ac.uk)
- Taking Jorum forward: [mimas.ac.uk/news/2011/05/jorum-listens/](http://mimas.ac.uk/news/2011/05/jorum-listens/)

## Forthcoming events

For a full up-to-date list, see [edina.ac.uk/events](http://edina.ac.uk/events)

### Training

#### Introduction to Digimap Collections

Imperial College London, 6 July 2011

[edina.ac.uk/events/courses/geo/2011-07-06-introduction\\_to\\_digimap\\_collections.html](http://edina.ac.uk/events/courses/geo/2011-07-06-introduction_to_digimap_collections.html)

### Conferences

#### Higher Education Academy Annual Conference

East Midlands Conference Centre, Nottingham, 5-6 July 2011  
[www.heacademy.ac.uk/eventsandnetworking/annualconference](http://www.heacademy.ac.uk/eventsandnetworking/annualconference)

#### RSC Eastern Digital Learning - e-Fair 2011

Suffolk New College, Ipswich, 7 July 2011  
[info.rsc-eastern.ac.uk/events/event\\_details.asp?eid=835](http://info.rsc-eastern.ac.uk/events/event_details.asp?eid=835)

#### Institutional Web Managers Workshop

University of Reading, 26-27 July 2011  
[iwmm.ukoln.ac.uk/iwmm2011](http://iwmm.ukoln.ac.uk/iwmm2011)

#### Repository Fringe 2011

University of Edinburgh, 3-5 August 2011  
[www.repositoryfringe.org](http://www.repositoryfringe.org)