

# Digimap Collections

## Roam Quick Reference Guide

Digimap's Ordnance Survey Collection is an online service that allows users to view and create maps of any location in Great Britain using Ordnance Survey map data. Users can also download data for use in other software packages, such as Geographical Information Systems (GIS), modelling software and CAD.

### What is Roam?

Roam is an online mapping facility available to all Digimap users. Roam provides 12 fixed scale map views of Ordnance Survey digital map data.

### Access

To use Digimap you first need to register. For full details of the registration process go to <http://edina.ac.uk/digimap/access/register.shtml>. You can also register by clicking on the **Login** button.

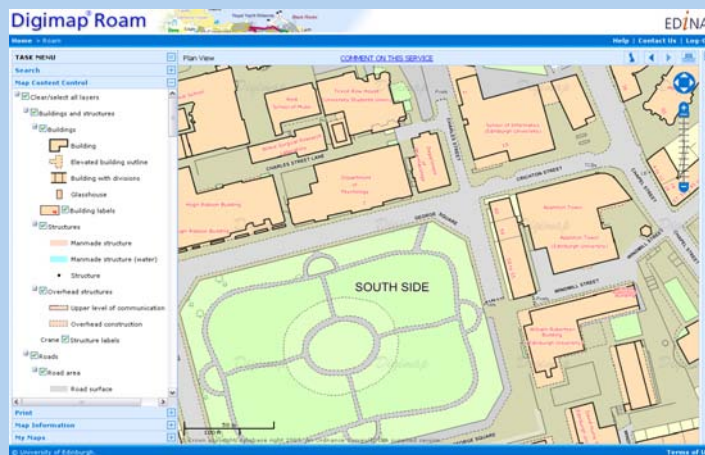
### System Requirements

Roam has the following minimum system requirements:

Web Browser:



- Internet Explorer 7.0 or later
- Firefox 3.0 or later
- Safari 4 or later

Javascript must be enabled. Adobe Acrobat Reader is required to view PDF maps generated for printing.



### Using Roam

**Do you want to make a map?**

 <p><b>Roam</b> Simple map creation. View and print maps at 12 fixed scales. <a href="#">More details ?</a></p>	 <p><b>Carto</b> Advanced map creation. Specify map content, area, scale and print size. <a href="#">More details ?</a></p>
--	--

To start, click the Roam icon on the OS Collection homepage. You can view a map either by searching for a specific location or using the navigation tools to zoom and/or reposition the map.

### Searching

There are three search options available in Roam: full postcode (e.g. EH9 IPR), place name and grid reference. Enter your search term in the appropriate box and click **Find**.

<b>Place name or full postcode</b>	<input type="text"/>	<a href="#">Find</a>
<b>Grid Reference</b>	<input type="text"/>	<a href="#">Find</a>

### Navigating

Navigating around maps in Roam is quick and easy. In addition to zooming and panning using the tools on your map, you can zoom in by double-clicking on the map or zoom in/out by scrolling the mouse wheel. Clicking the map with the left-mouse button and dragging means you can move the map to your area of interest.



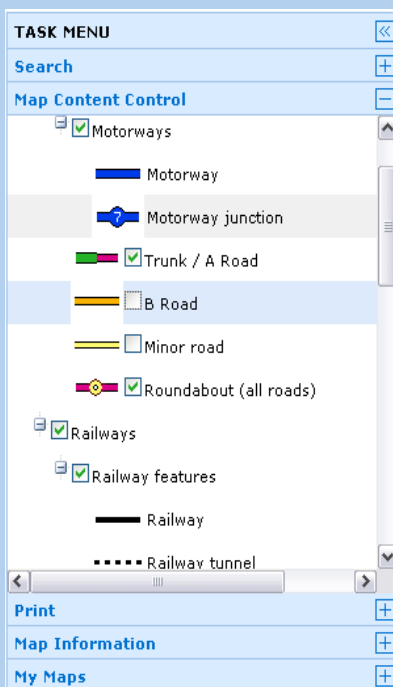
<http://edina.ac.uk/digimap/>

Supported by

**JISC**

Service from

**EDINA**



## Map content

You can control the content of several map views. Click on Map Content Control in the left hand panel. This enables you to display only the map features you require, e.g. just the roads and railways.

## Map information

The Map Information tab gives details of the extent and printing scale of the map currently displayed on screen.

## My Maps

My Maps enables you to save your favourite maps for future reference, similar to bookmarking your favourite websites.

## Printing

Generate high resolution printable maps in landscape or portrait orientation. Maps include a scale bar and the option to add a title. Maps are delivered as PDF with A3 and A4 options available. You can either print maps immediately or save them locally for later use.



## Available data

Roam comprises 12 fixed scale map views ranging from a small scale Great Britain outline and regional maps to the most detailed Ordnance Survey mapping product (OS MasterMap® Topography Layer).

The datasets and print scales for each map view level are:

View Level	OS map data product(s)	Print Scale
GB	Stratagi® data and Digital Chart of the World country outlines	1:8,000,000
National	Miniscale®	1:1,600,000
Regional	Miniscale®	1:800,000
County	Miniscale®	1:400,000
Metropolitan	Stratagi®	1:200,000
City	Stratagi®	1:100,000
District	Meridian™ and Land-Form PANORAMA contours	1:50,000
Local	1:50 000 Scale Colour Raster	1:20,000
Neighbourhood	1:25 000 Scale Colour Raster	1:10,000
Street	1:10 000 Scale Colour Raster	1:5,000
Detailed	OS MasterMap® Topography Layer	1:2,500
Plan	OS MasterMap® Topography Layer	1:1,250

## Help and Further Information

Comprehensive help and support about the service and the data is available from the help pages and the EDINA helpdesk (edina@ed.ac.uk) Hints & Tips can be found in the right-hand panel of Roam.

## Terms of Use

The maps and data available through Digimap are the property of Ordnance Survey and are protected by copyright. The licence allows you to use maps and data from Digimap in academic research and teaching. Restrictions on what you can do with the maps and data are detailed on the Digimap website. It is your responsibility to ensure that you do not breach these terms; appropriate action may be taken if you do.