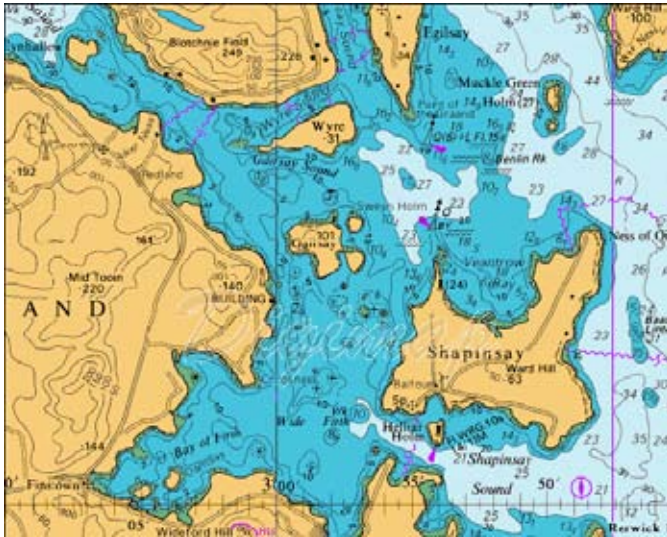


- General - small to mid scale (1:200,000 to 1:100,000)
- Coastal - mid scale (1:100,000 to 1:50,000)
- Approaches - mid to large scale (1:50,000 to 1:15,000)
- Harbour - large scale (1:25,000 to 1:2,500)



The data is available in GeoTiff format.

### Hydrospatial Data

A key digital geographic information product depicting the UK marine and coastal zone environment. This rich vector dataset is provided in six individual Topic Layers, each of which contains a number of Themes:

**Bathymetry and Elevation** - The nature and shape of the Earth's surface on land (elevation) and under the sea (bathymetry).

**Natural and Physical Features** - The natural topography of the coastal and marine environment including the biological, physical and chemical features within it. Themes include Land Cover, Fauna & Flora, Geology, Hydrology, Sea Cover.

**Structures and Obstructions** - Man-made physical structures and obstructions. Themes include Wrecks, Offshore Installations, Shoreline Constructions, Navigational Aids, Obstructions.

**Socio Economic and Marine Use** - Specified areas where one or more activities have been designated, are known to occur or are restricted. Themes include Admin & Regulation, Activity & Licence Areas, Aquaculture & Fisheries, National Limits, Transportation & Routes.

**Conservation and Environmental Protection** - Designated boundaries for the purposes of conservation and environmental protection of natural and cultural heritage.

**Climate and Oceanography** - Climate and weather information, tides and currents or locations where measurement and monitoring is or has been know to occur.

The data is available in ESRI Shapefile and MapInfo Table formats.

### Help and Further Information

There is extensive help and further information about the data and the service on the Digimap web site. This information includes context-sensitive help for use of the service, tutorials, detailed explanations of each dataset, FAQs and information about the use of downloaded data.

Each subscribing institution has a Digimap site representative, and may also have specialists to assist with computing and map data issues. Within Digimap you will have access to web pages explaining your institutions arrangements for Digimap, and to your institutions Digimap email support, if available. Your site representative (see <http://edina.ac.uk/digimap/list.shtml>) will be able to advise.

### Terms of Use

The data available through Digimap is the property of SeaZone, and is protected by copyright. The licence allows you to use maps and data from Digimap in academic research and teaching. Restrictions on what you can do with the maps and data are detailed on the Digimap web site. It is your responsibility to ensure that you do not breach these terms; appropriate action may be taken if you do.



### Marine Digimap Quick Reference Guide

Marine Digimap is an online service that allows users to view maps of any location in UK Coastal Waters using UK Hydrographic Office charts from SeaZone.

Users can also download Hydrospatial data and Charts for use in other software packages, such as Geographical Information Systems (GIS), drawing software and CAD.

For further information about the registration process talk to your local site representative.

<http://edina.ac.uk/digimap/>

Supported by  
**JISC**

Service from  
**EDINA**

## Access

To use Marine Digimap you first need to register. Full details of the registration process can be found here:

<http://edina.ac.uk/digimap/access/register.shtml>

For further information about the registration process talk to your local site representative. Site representative details are available from:

<http://edina.ac.uk/digimap/list.shtml>

EDINA services are normally available 24 hours a day, 7 days a week. Any planned service breaks will be announced via the EDINA web site.

## Help & Further Information

For more information, contact your local library, email [edina@ed.ac.uk](mailto:edina@ed.ac.uk), or go to <http://edina.ac.uk>

## Connecting to EDINA Marine Digimap

To use EDINA Marine Digimap you need a web browser which supports tables, frames and forms. The user interface is enhanced if your Web browser supports JavaScript (although this is not essential).

To login follow the login details on the service homepage or from your institutional login link.

## Choosing a Service

When you first login to Marine Digimap, you will see there are 4 icon buttons with brief descriptions of the facilities of each service. There is a navigation bar down the left hand side which gives you access to support information including help pages.

The screenshot shows the Marine Digimap homepage. At the top, there is a navigation bar with 'Home', 'Help', and 'Log-Out'. Below this, there are several sections: 'Welcome to Marine Digimap. Please select the facility you want to use.' with two main options: 'Do you want to make a map?' and 'Do you want to download data?'. Under 'Do you want to make a map?', there are two icons: 'Marine Maps' (View and print marine maps) and 'Marine Lexicon' (Explore symbols and abbreviations used on marine maps). Under 'Do you want to download data?', there are two icons: 'Hydrospatial Download' (Select and download Hydrospatial data (vector) for use in GIS) and 'Charted Raster Download' (Select and download Charted Raster data for use in GIS). On the left side, there is a vertical navigation menu with links for 'Help', 'Getting Started', 'About Mapping Products', 'FAQ', 'Copyright/Terms of Use', and 'Accessibility Statement'. At the bottom, there is a footer with '© University of Edinburgh'.

## Using Marine Maps

Marine Maps uses the Charted Raster product which comes in several Usage Bands. These are based on the scale of the maps and the level of detail they show. By using the dropdown menu on the search page you can see which areas are covered by each Usage Band. You can use one of several search options to find the area you want, or simply click on the map of Great Britain as close to your chosen map location as possible.



Above the map are a series of map icons. These allow you to make maps at pre-defined views. There is one icon for each view:

- Ocean view: 1:3,500,000 to 1:750,000.
- Sea view: 1:750,000 to 1:300,000.
- General view: 1:200,000 to 1:100,000.
- Coastal view: 1:100,000 to 1:50,000.

- Approaches view: 1:50,000 to 1:15,000.
- Harbour view: 1:25,000 to 1:2,500.

The left hand side of the map screen contains a location map and a legend panel. It is possible to use the location map to find out if there are larger or smaller scale maps in the area before changing the map view.

When you are happy with the location and content of your map, you can use the box underneath the map to type in a name. This will become the file name for the image, so it is advisable not to make it too long. Click the button marked Store Map.

## Marine Lexicon

The Marine Lexicon allows you to search through a list of features found in the Charted Raster Maps to see which symbols are used to depict them. There are too many features to fit in a legend beside the maps so this facility allows you to discover how some of the less commonly used features are symbolised.

## Data download

Marine Digimap has two download facilities for the datasets described below; one for the Charted Raster Data and one for the Hydrospatial data. These facility allows you to download individual data tiles and maps in ESRI Shapefile, MapInfo TAB and GeoTiff image formats for immediate use in a GIS. There are also projection and symbology information available to download from the help pages.

## The Data

### Charted Raster

Scanned and geocoded images of the Admiralty Chart series, ideal for general reference and backdrop mapping but are NOT for navigational use. The charts cover a broad range of scales, which fall into these internationally recognised usage bands:

- Overview - small scale (1:3,500,000 to 1:300,000)